

Maleny Voice

Open Community Magazine and Portal

[Home](#) [News](#) [Notices](#) [Media](#) [Articles](#)

Obi Obi Protest - Maleny Residents Banned From Half Their Town

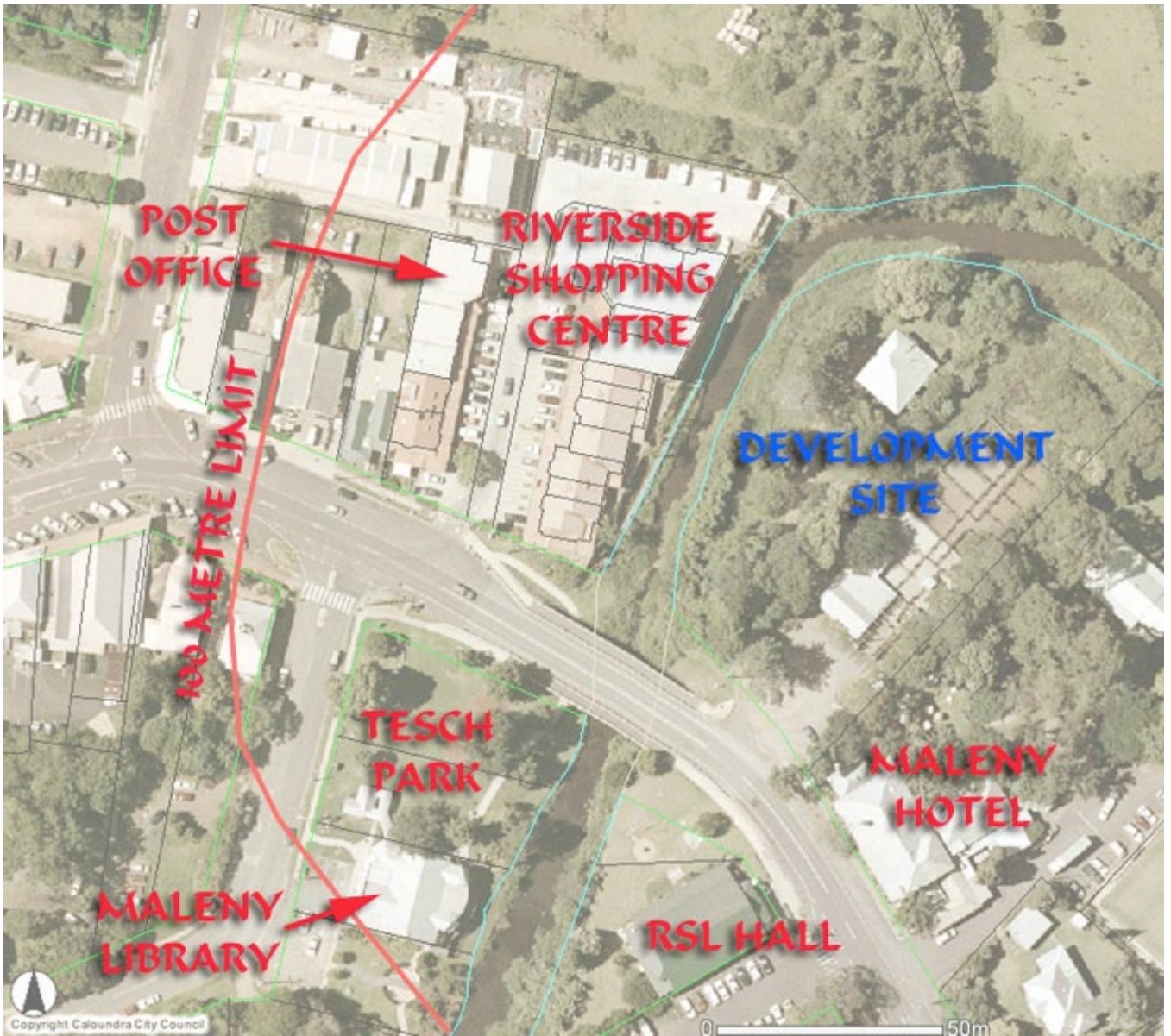
A 100 metre total exclusion zone has been imposed on Maleny residents arrested at the controversial development site in Maleny.

They are not allowed near the development site - fair enough.

However, they have also been banned from the following locations in our small one-street-town:

- **Banned from the Maleny Hotel (only pub in town)**
- **Banned from the Maleny RSL Memorial Hall**
- **Banned from the Maleny Library**
- **Banned from the Maleny Post Office**
- **Banned from the Riverside Shopping Centre (over one third of all shops in town)**
- **Banned from Tesch Park (major recreational park and children's playground in town)**
- **Banned from taking children to the primary school on foot.**
- **Banned from driving out of town to the coast (other than using a 4km detour around the town centre)**

Is this a fair and reasonable thing to do to people in our small town? We ask Mr Beattie to do the right thing and amend these draconian conditions placed on Maleny citizens immediately.



Published 24 July 2005