

# ACCURATE DETECTION

## *Underground Survey to locate Platypus Burrows at Obi Obi Creek*

**Contact : Andrew Clark**  
**0410 308 732**  
[ac@accuratedetection.com](mailto:ac@accuratedetection.com)

**Accurate Detection Pty Ltd**  
ABN : 44 102 464 504  
PO BOX 1141 Rozelle, NSW 2039, Australia.  
9 Wrights Road, Drummoyne, NSW 2047, Australia.  
Internet: [www.accuratedetection.com](http://www.accuratedetection.com)

Brisbane	Melbourne	Sydney
Telephone: 1300 887 735	Telephone: 1300 887 735	Telephone: 02 9911 6687
Facsimile: 07 3251 0552	Facsimile: 03 8660 2128	Facsimile: 02 9383 8393

## **Contents**

1. Introduction
2. Findings
3. Conclusions
4. Recommendations

**Accurate Detection Pty Ltd**

ABN : 44 102 464 504

PO BOX 1141 Rozelle, NSW 2039, Australia.  
9 Wrights Road, Drummoyne, NSW 2047, Australia.  
Internet: [www accuratedetection.com](http://www accuratedetection.com)

Brisbane	Melbourne	Sydney
Telephone: 1300 887 735	Telephone: 1300 887 735	Telephone: 02 9911 6687
Facsimile: 07 3251 0552	Facsimile: 03 8660 2128	Facsimile: 02 9383 8393

## 1. Introduction

On Saturday 9<sup>th</sup> July 2005 I set out to perform an initial survey using Ground Penetrating Radar to map out some of the Platypus Burrows at Obi Obi creek. The aim was to try and determine the length and direction of their burrows.

Prior to this survey a marine diver had already mapped and marked the locations of the Platypus burrows and the ground had been cleared in a small area to perform this preliminary survey. The area cleared for using the GPR was approx twenty metres (running alongside the creek) by four to five metres (away from the creek.)

I have had five years experience in locating pipes and cables and often provide training courses for major utilities like Epic Energy, Agility, Duke Energy, National Power Services, Gosford City Council, City West Water and Powerlink.

The equipment I used was the Easy Locator made by Mala of Sweden, they are a world leader in the field of GPR.

### **Accurate Detection Pty Ltd**

ABN : 44 102 464 504

PO BOX 1141 Rozelle, NSW 2039, Australia.

9 Wrights Road, Drummoyne, NSW 2047, Australia.

Internet: [www accuratedetection.com](http://www accuratedetection.com)

Brisbane

Telephone: 1300 887 735

Facsimile: 07 3251 0552

Melbourne

Telephone: 1300 887 735

Facsimile: 03 8660 2128

Sydney

Telephone: 02 9911 6687

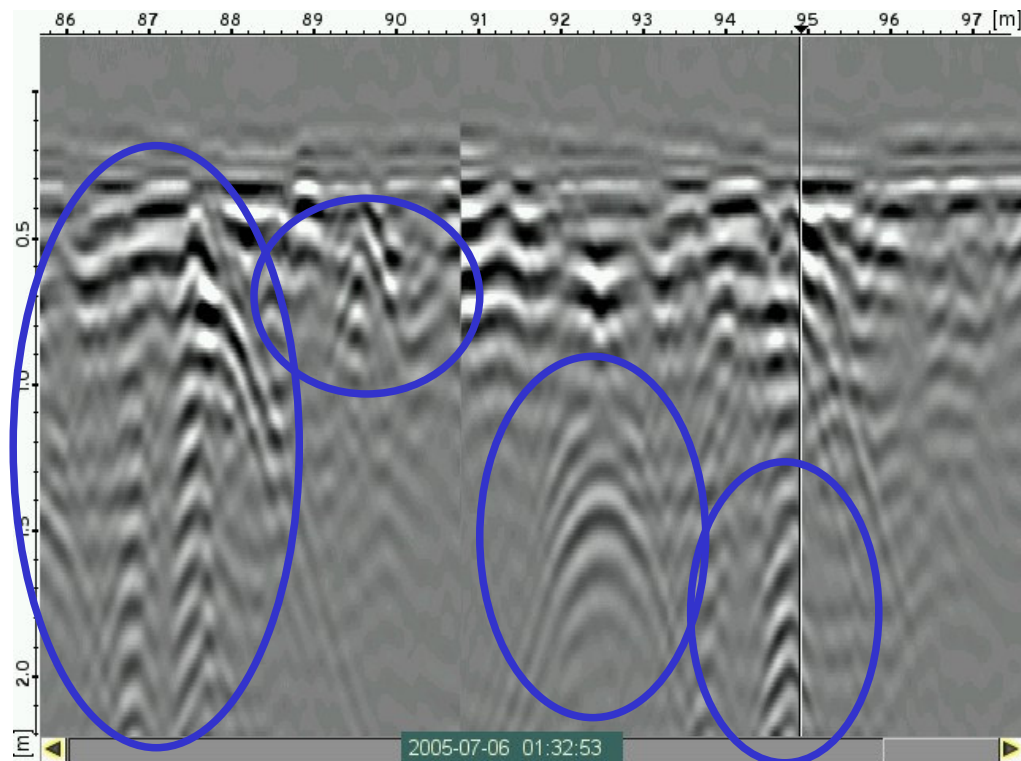
Facsimile: 02 9383 8393

## 2. Findings

The survey was performed by making multiple sweeps at a 90 degree angle to the creek. I made 5 sweeps across the area designated for this survey and found extreme consistency and repeatability in the location of the burrows. After each sweep I returned to physically mark the location of the suspected burrow. A couple of the burrows did not have a crystal clear image, I marked the position continued my runs and evaluated the consistency of the positioning after all of the sweeps were complete to eliminate any false readings. There were only about two or three false readings in the whole area, which is an exceptionally good result.

Eight burrows were found in the twenty metre survey zone and all were traced back as far as physically possible before obstructions prevented me from going any further. One burrow was traced twenty five to thirty metres from the creek, another twenty and the rest about five metres.

I have enclosed a few samples of the captured images.

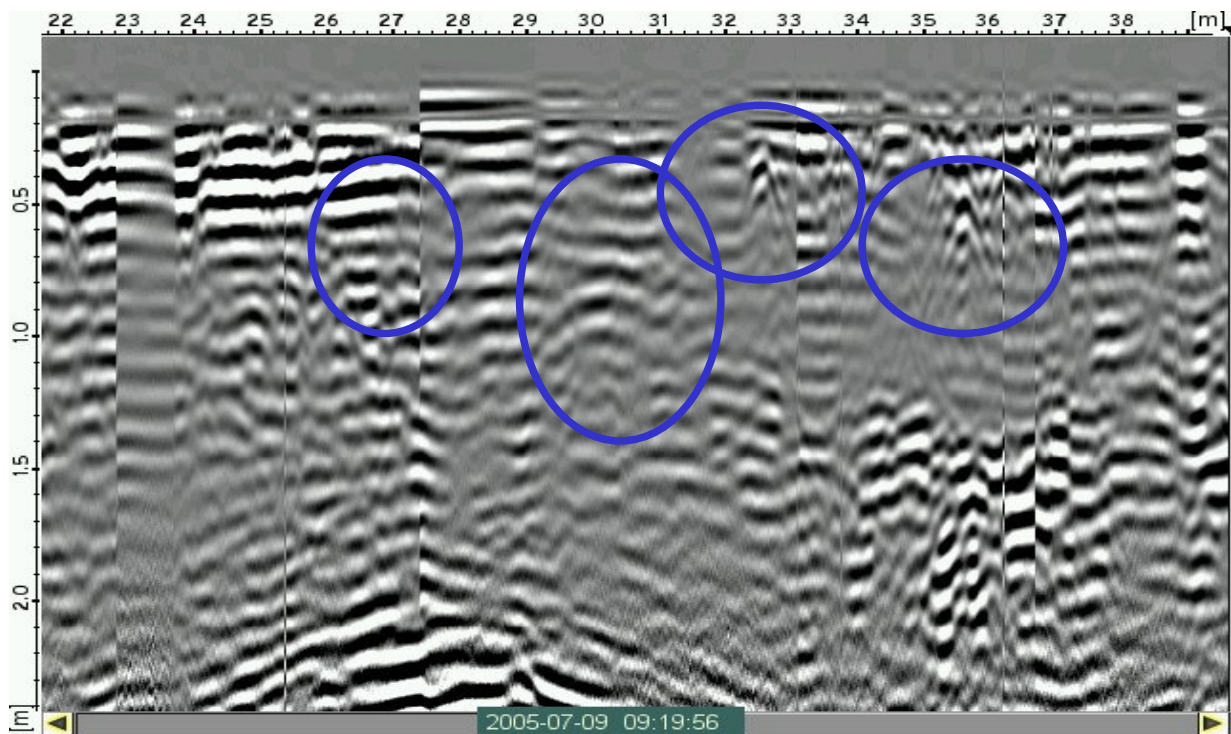
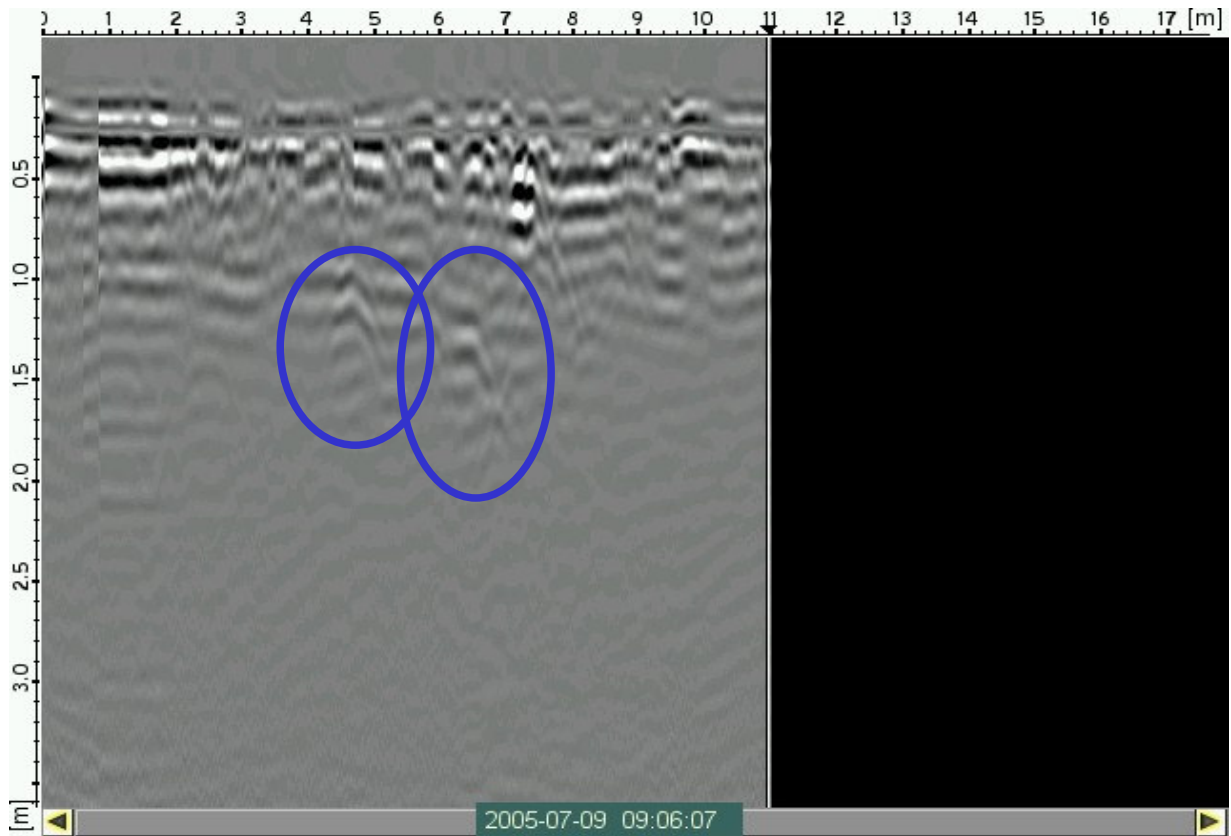


### Accurate Detection Pty Ltd

ABN : 44 102 464 504

PO BOX 1141 Rozelle, NSW 2039, Australia.  
9 Wrights Road, Drummoyne, NSW 2047, Australia.  
Internet: [www accuratedetection.com](http://www accuratedetection.com)

Brisbane	Melbourne	Sydney
Telephone: 1300 887 735	Telephone: 1300 887 735	Telephone: 02 9911 6687
Facsimile: 07 3251 0552	Facsimile: 03 8660 2128	Facsimile: 02 9383 8393



**Accurate Detection Pty Ltd**

ABN : 44 102 464 504

PO BOX 1141 Rozelle, NSW 2039, Australia.

9 Wrights Road, Drummoyne, NSW 2047, Australia.

Internet: [www.accuratedetection.com](http://www.accuratedetection.com)

Brisbane

Telephone: 1300 887 735

Facsimile: 07 3251 0552

Melbourne

Telephone: 1300 887 735

Facsimile: 03 8660 2128

Sydney

Telephone: 02 9911 6687

Facsimile: 02 9383 8393

### **3. Conclusions**

With eight burrows in this small sample section you would expect to find forty to sixty burrows on the entire site.

The locations of the burrows matched the locations of the mapped openings.

The direction of the burrows seems to be in a straight line away from the creek.

The burrows are at least twenty five to thirty metres long and maybe more.

### **4. Recommendations**

A full study on this site should be performed to assess the environmental impact of the proposed building work.

**Accurate Detection Pty Ltd**

ABN : 44 102 464 504

PO BOX 1141 Rozelle, NSW 2039, Australia.

9 Wrights Road, Drummoyne, NSW 2047, Australia.

Internet: [www accuratedetection.com](http://www accuratedetection.com)

Brisbane

Telephone: 1300 887 735

Facsimile: 07 3251 0552

Melbourne

Telephone: 1300 887 735

Facsimile: 03 8660 2128

Sydney

Telephone: 02 9911 6687

Facsimile: 02 9383 8393